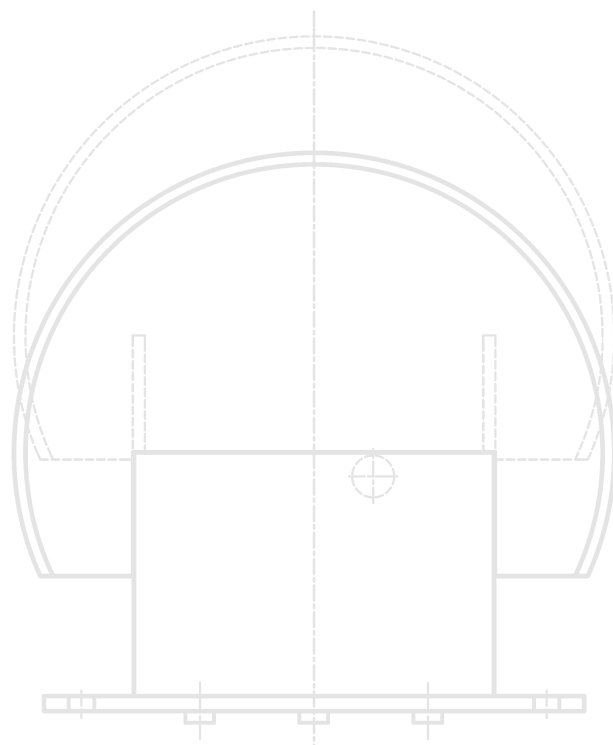
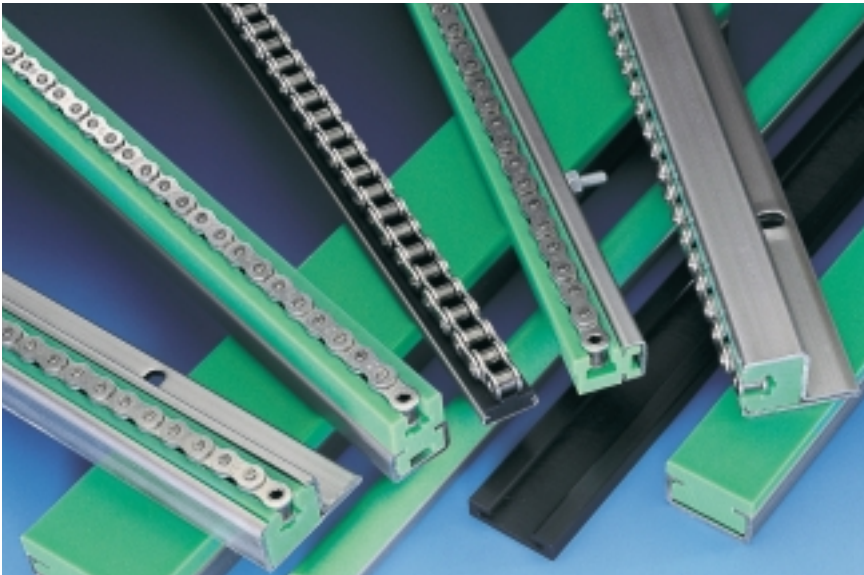


The background features a blurred, abstract composition of curved shapes. A prominent, bright green curved band arches across the upper portion of the image. Below it, various shades of blue and teal create a sense of depth and movement. The overall aesthetic is clean and modern, typical of a corporate or technical document cover.

# Standard Product Range



## Fast delivery thanks to large range of standard products

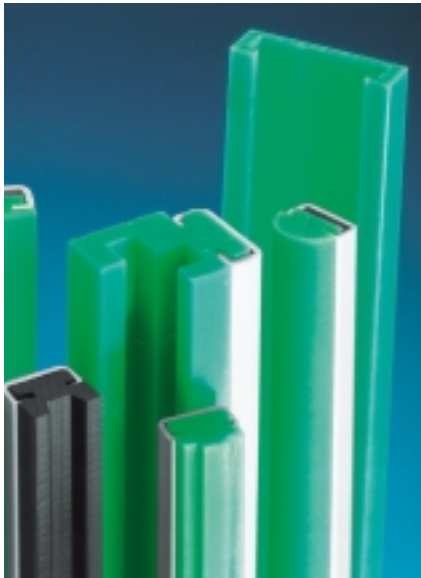


Our large range of standard products means fast delivery to you. Their immediate availability makes your project run better and ensures that your order is processed on time – a good start for meeting your clients' demands.

- ▶ chain/belt guides
- ▶ chain/belt tensioners
- ▶ cam guides
- ▶ guide rails
- ▶ tapes and profiles
- ▶ chain wheels/rollers
- ▶ chain racks
- ▶ lubrication systems



## Chain Guides



Metal guide and support profiles lead to heavy wear on chains.

In order to reduce that wear as well as frictional resistance and noise levels, they have to be lubricated at regular intervals.

That is why Murtfeldt developed highly wear resistant guides made from plastics for roller and round link chains.

Today, we offer a large variety of chain guide systems for every application. Both our Original Material "S"<sup>®</sup> and Material "S"1000<sup>®</sup> are ideally suited for guides of roller and round link chains, thus obviating additional lubrication, reducing the driving power required and resulting in long, maintenance-free life.

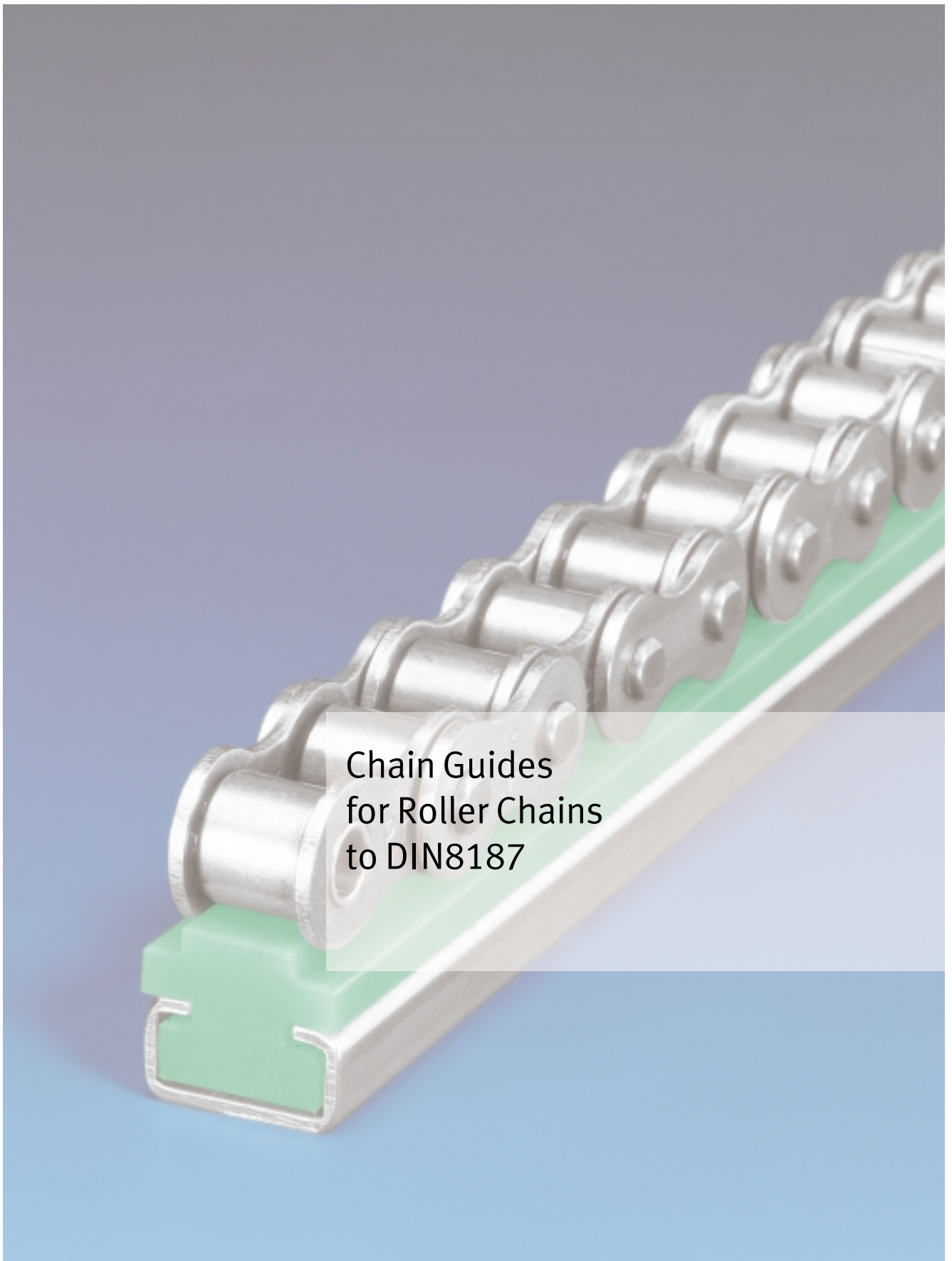
- ▶ high abrasion resistance
- ▶ low coefficient of sliding friction
- ▶ self-lubricating (no need for any oil lubrication)
- ▶ extremely high impact and breaking strengths at low temperatures, down to –250 °C
- ▶ high chemical resistance
- ▶ vibration dampening
- ▶ no moisture absorption
- ▶ no corrosion
- ▶ approved for direct contact with food (EU directives and FDA)

Our comprehensive range of guides for roller chains to DIN8187 and round link chains to DIN766 and DIN764 is available ex stock. For further details, please see the following pages.

All our chain guides are also available ex stock in Material "S"1000<sup>®</sup>, a more economical alternative.

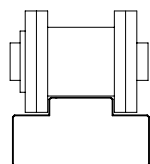
Our modern equipment and machinery allow low-cost production, even in very small runs, of special guides to your specification.

Please see pg 136 of this catalogue for information on designing your own guides.

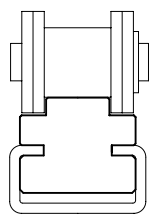


Chain Guides  
for Roller Chains  
to DIN8187

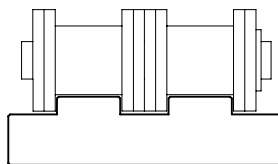
# Chain Guides for Roller Chains



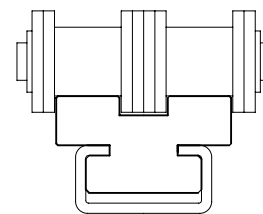
Type T  
on pg 94



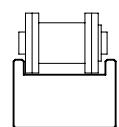
Type CT  
on pg 95



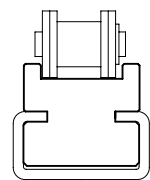
Type Double-T  
on pg 96



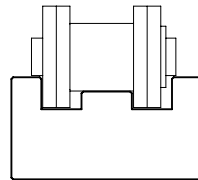
Type Double-CT  
on pg 97



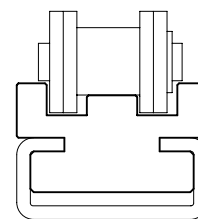
Type TU  
on pg 98



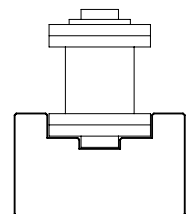
Type CTU  
on pg 99



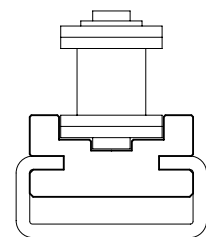
Type TS  
on pg 100



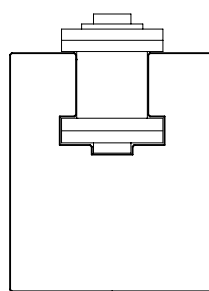
Type CTS  
on pg 101



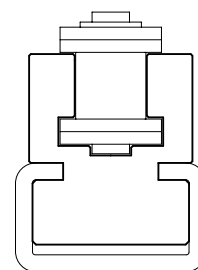
Type U  
on pg 102



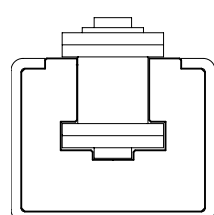
Type CU  
on pg 103



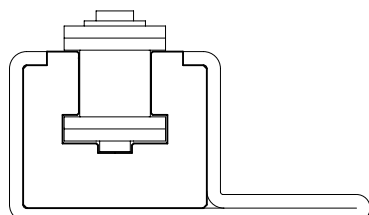
Type K  
on pg 104



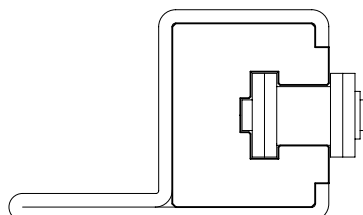
Type CK  
on pg 105



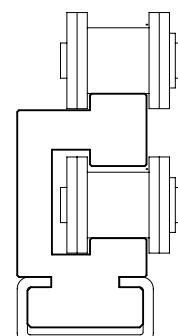
Type CKG  
on pg 106



Type CKG 15 V  
on pg 107



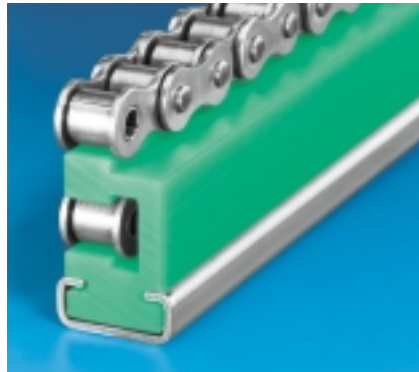
Type CKG 14 H  
on pg 108



Type ETA  
on pg 109

## Guides for Roller Chains

Our standard range of guides for roller chains comprises 16 different designs in two materials at your option: high-quality Original Material "S"<sup>®</sup> green and lower-cost Material "S" 1000<sup>®</sup> green.

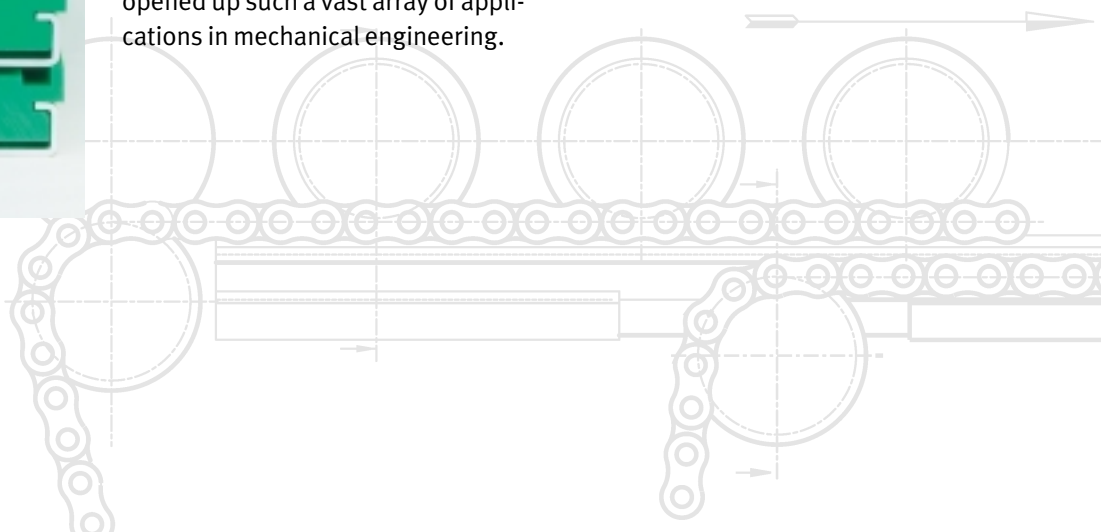


Material "S" 1000<sup>®</sup> is exclusively produced from ultra-macromolecular polyethylene. Its hi-tech manufacturing process mixes pure ultra-macromolecular polyethylene powder with ground Original Material "S"<sup>®</sup>. Under both high pressure and high temperature, this finely ground powder is then pressed into new semi-finished products. The result is a high-quality type of material impressive for its high abrasion resistance, good slide qualities and a very positive price-performance ratio.



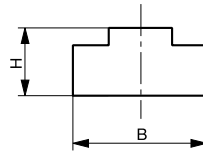
Original Material "S"<sup>®</sup> is produced on the basis of a pure ultra-macromolecular, low-pressure polyethylene.

Its raw materials to DIN16783 and its manufacturing process – continuously optimized over more than 40 years by now – of sintering under pressure ensure that Original Material "S"<sup>®</sup> retains the qualities which first opened up such a vast array of applications in mechanical engineering.



# Type T (Original Material "S"<sup>®</sup>green)

## Chain Guides for Roller Chains to **DIN8187**



Chain size in inches	Chain size DIN8187	B mm	H mm	Weight kg/m	Length (tolerance +0/+7) mm	Part no.	Availability
3/8" x 7/32"	06B-1	15	10	0.13	2000	221 010 002	●
1/2" x 3/16"	083-1	15	10	0.13	2000	221 010 003	●
1/2" x 1/4"	085-1	20	10	0.16	2000	221 010 004	○
1/2" x 5/16"	08B-1	20	10	0.18	2000	221 010 005	●
1/2" x 5/16"	08B-1	20	15	0.26	2000	221 010 006	●
1/2" x 5/16"	08B-1	20	20	0.34	2000	221 010 007	●
1/2" x 5/16"	08B-1	20	30	0.55	2000	221 010 008	●
5/8" x 1/4"	–	20	10	0.16	2000	221 010 009	○
5/8" x 3/8"	10B-1	20	10	0.16	2000	221 010 010	●
5/8" x 3/8"	10B-1	20	15	0.25	2000	221 010 011	●
5/8" x 3/8"	10B-1	20	20	0.36	2000	221 010 012	○
5/8" x 3/8"	10B-1	20	30	0.55	2000	221 010 013	○
3/4" x 7/16"	12B-1	25	10	0.20	2000	221 010 014	●
3/4" x 7/16"	12B-1	25	15	0.32	2000	221 010 015	●
3/4" x 7/16"	12B-1	25	20	0.43	2000	221 010 016	●
3/4" x 7/16"	12B-1	25	30	0.69	2000	221 010 017	●
1" x 17mm	16B-1	40	15	0.45	2000	221 010 018	●
1" x 17mm	16B-1	40	20	0.68	2000	221 010 019	●
1" x 17mm	16B-1	40	30	1.05	2000	221 010 020	●
1 1/4" x 3/4"	20B-1	45	15	0.55	2000	221 010 021	●
1 1/2" x 1"	24B-1	60	15	0.68	2000	221 010 022	●
1 3/4" x 31mm	28B-1	75	20	1.15	2000	221 010 023	○
2" x 31mm	32B-1	80	20	1.17	2000	221 010 024	○

All chain guides are available in Original Material "S"<sup>®</sup>green or Material "S" 1000<sup>®</sup>.

Please order as follows:

Example:

Chain guide in Original Material "S"<sup>®</sup>green

Part no.: 221 010 002

Chain guide in Material "S" 1000<sup>®</sup>green

Part no.: 221 020 002

Special sizes/designs, other technical or high-performance materials on request.

Special profiles, see pp. 143–145.

Intermediate sizes available at short notice and charged at full meter prices. Tolerances at cross-section of profile to DIN2768, tolerance class m. Properties of materials, see pg 14.

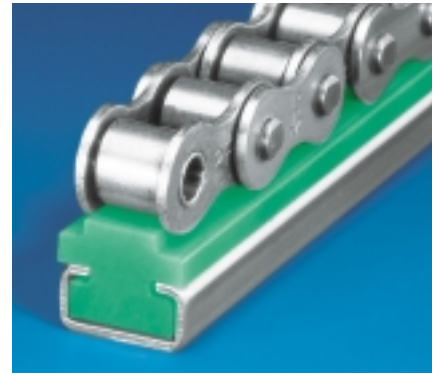
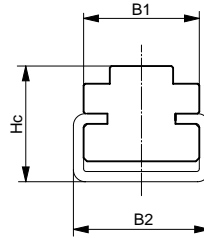
● ex stock

○ at short notice on request



## Type CT (Original Material "S"<sup>®</sup>green)

### Chain Guides with Steel C-Profile for Roller Chains to **DIN8187**



Chain size in inches	Chain size DIN8187	C-profile type	B <sub>1</sub> mm	B <sub>2</sub> mm	H <sub>c</sub> mm	Weight kg/m	Length chain guide (tolerance +0/+7) mm	Length steel C-profile (tolerance +0/+40) mm	Part no.	Availability
3/8" x 7/32"	06B-1	C3	17	20	17	0.81	2000	2000 6000	221 210 215 221 210 315	○ ○
1/2" x 3/16"	083-1	C3	17	20	17	0.81	2000	2000 6000	221 210 202 221 210 302	○ ○
1/2" x 1/4"	085-1	C3	17	20	17	0.81	2000	2000 6000	221 210 203 221 210 303	○ ○
1/2" x 5/16"	08B-1	C1	20	24	11	0.43	2000	2000 6000	221 210 201 221 210 301	● ●
1/2" x 5/16"	08B-1	C3	17	20	17	0.81	2000	2000 6000	221 210 204 221 210 304	● ●
5/8" x 1/4"	–	C3	17	20	17	0.82	2000	2000 6000	221 210 205 221 210 305	○ ●
5/8" x 3/8"	10B-1	C3	17	20	17	0.82	2000	2000 6000	221 210 206 221 210 306	● ●
3/4" x 7/16"	12B-1	C3	20	20	17	0.83	2000	2000 6000	221 210 207 221 210 307	● ●
3/4" x 7/16"	12B-1	C5	24	28	18	1.22	2000	2000 6000	221 210 208 221 210 308	● ●
1" x 17mm	16B-1	C5	24	28	18	1.23	2000	2000 6000	221 210 209 221 210 309	● ●
1 1/4" x 3/4"	20B-1	C5	28	28	18	1.23	2000	2000 6000	221 210 210 221 210 310	● ●
1 1/2" x 1"	24B-1	C9	33	38	30	2.61	2000	2000 6000	221 210 211 221 210 311	○ ○
1 3/4" x 31mm	28B-1	C9	38	38	30	2.66	2000	2000 6000	221 210 212 221 210 312	○ ○
2" x 31mm	32B-1	C9	38	38	30	2.66	2000	2000 6000	221 210 213 221 210 313	○ ○
2" x 31mm	32B-1	C12	60	60	35	3.31	2000	2000 6000	221 210 214 221 210 314	○ ○

All chain guides are available in Original Material "S"<sup>®</sup>green or Material "S" 1000<sup>®</sup>.

Please order as follows:

Example:

Chain guide in Original Material "S"<sup>®</sup>green with steel C-profile, galvanized  
Part no.: 221 210 215

Chain guide in Material "S" 1000<sup>®</sup>green with steel C-profile, galvanized  
Part no.: 221 220 215

Special sizes/designs, other technical or high-performance materials on request.

Steel C-profile in stainless steel (V2A) also available ex stock.

Chain guides also available without steel C-profile. Special profiles, see pp 143–145.

Intermediate sizes available at short notice and charged at full meter prices. Tolerances at cross-section of plastic profile to DIN2768, tolerance class m.

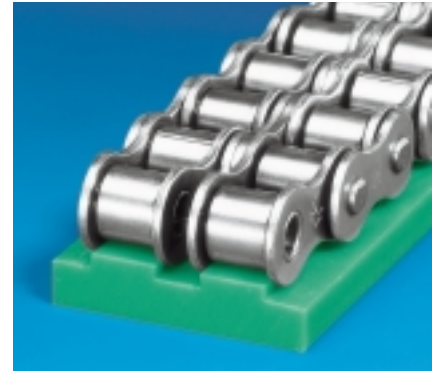
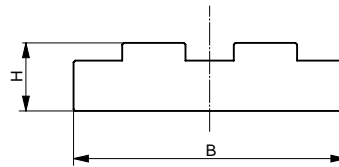
Tolerances and sizes of steel C-profiles, see pp 135–136.

Properties of materials, see pg 14.

- ex stock
- at short notice on request

# Type Double-T (Original Material "S"<sup>®</sup>green)

Chain Guides for Roller Chains  
to **DIN8187**



Chain size in inches	Chain size DIN8187	B mm	H mm	Weight kg/m	Length (tolerance +0/+7) mm	Part no.	Availability
3/8" x 7/32"	06B-2	25	10	0.22	2000	221 010 025	●
1/2" x 5/16"	08B-2	35	10	0.30	2000	221 010 026	●
1/2" x 5/16"	08B-2	35	15	0.46	2000	221 010 027	●
1/2" x 5/16"	08B-2	35	20	0.63	2000	221 010 028	●
1/2" x 5/16"	08B-2	35	30	1.00	2000	221 010 029	○
5/8" x 3/8"	10B-2	40	10	0.32	2000	221 010 030	●
3/4" x 7/16"	12B-2	45	10	0.38	2000	221 010 032	●
3/4" x 7/16"	12B-2	45	15	0.49	2000	221 010 031	○
1" x 17mm	16B-2	48	15	0.60	2000	221 010 033	●
1 1/4" x 3/4"	20B-2	55	15	0.67	2000	221 010 034	○
1 1/2" x 1"	24B-2	72	20	1.40	2000	221 010 035	○
1 3/4" x 31mm	28B-2	89	25	2.15	2000	221 010 036	○
2" x 31mm	32B-2	88	30	2.55	2000	221 010 037	○

All chain guides are available in Original Material "S"<sup>®</sup>green or Material "S" 1000<sup>®</sup>.

Please order as follows:

Example:

Chain guide in Original Material "S"<sup>®</sup>green

Part no.: 221 010 025

Chain guide in Material "S" 1000<sup>®</sup> green

Part no.: 221 020 025

Special sizes/designs, other technical or high-performance materials on request.

Special profiles, see pp 143–145.

Intermediate sizes available at short notice and

charged at full meter prices. Tolerances at cross-

section of plastic profile to DIN2768,

tolerance class m.

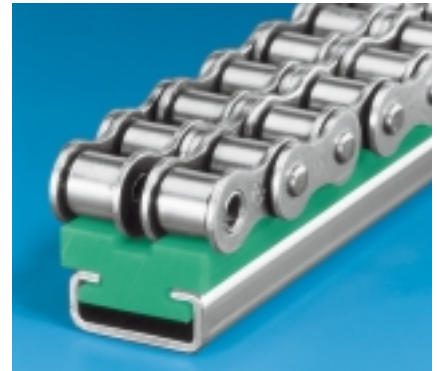
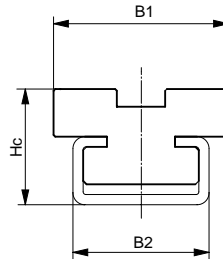
Properties of materials, see pg 14.

● ex stock

○ at short notice on request

# Type Double-CT (Original Material "S"<sup>®</sup>green)

Chain Guides with Steel C-Profile for Roller Chains to **DIN8187**



Chain size in inches	Chain size DIN8187	C-profile type	B <sub>1</sub> mm	B <sub>2</sub> mm	H <sub>c</sub> mm	Weight kg/m	Length chain guide (tolerance +0/+7) mm	Length steel C-profile (tolerance +0/+40) mm	Part no.	Availability
3/8" x 7/32"	06B-2	C3	15.7	20	17	0.71	2000	2000 6000	221 210 222 221 210 322	● ●
1/2" x 5/16"	08B-2	C3	21.2	20	17	0.82	2000	2000 6000	221 210 216 221 210 316	● ●
5/8" x 3/8"	10B-2	C3	25.7	20	17	0.83	2000	2000 6000	221 210 217 221 210 317	● ●
3/4" x 7/16"	12B-2	C5	30.7	28	20	1.24	2000	2000 6000	221 210 218 221 210 318	● ●
1" x 17mm	16B-2	C9	48.0	38	27	2.21	2000	2000 6000	221 210 219 221 210 319	○ ○
1 1/4" x 3/4"	20B-2	C12	55.0	60	30	3.47	2000	2000 6000	221 210 220 221 210 320	○ ○
1 1/2" x 1"	24B-2	C12	72.0	60	35	4.01	2000	2000 6000	221 210 221 221 210 321	○ ○

All chain guides are available in Original Material "S"<sup>®</sup>green or Material "S" 1000<sup>®</sup>. Please order as follows:  
 Example:  
 Chain guide in Original Material "S"<sup>®</sup>green with steel C-profile, galvanized  
 Part no.: 221 210 222  
 Chain guide in Material "S" 1000<sup>®</sup>green with steel C-profile, galvanized  
 Part no.: 221 220 222

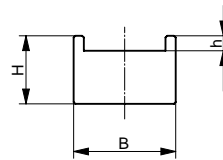
Special sizes/designs, other technical or high-performance materials on request.  
 Steel C-profile in stainless steel (V2A) also available ex stock.  
 Chain guides also available without steel C-profile.  
 Special profiles, see pp 143–145.  
 Intermediate sizes available at short notice and charged at full meter prices. Tolerances at cross-section of plastic profile to DIN2768, tolerance class m. Tolerances and sizes of steel C-profiles, see pp 135–136. Properties of materials, see pg 14.

- ex stock
- at short notice on request



# Type TU (Original Material "S"<sup>®</sup>green)

Chain Guides for Roller Chains  
to **DIN8187**

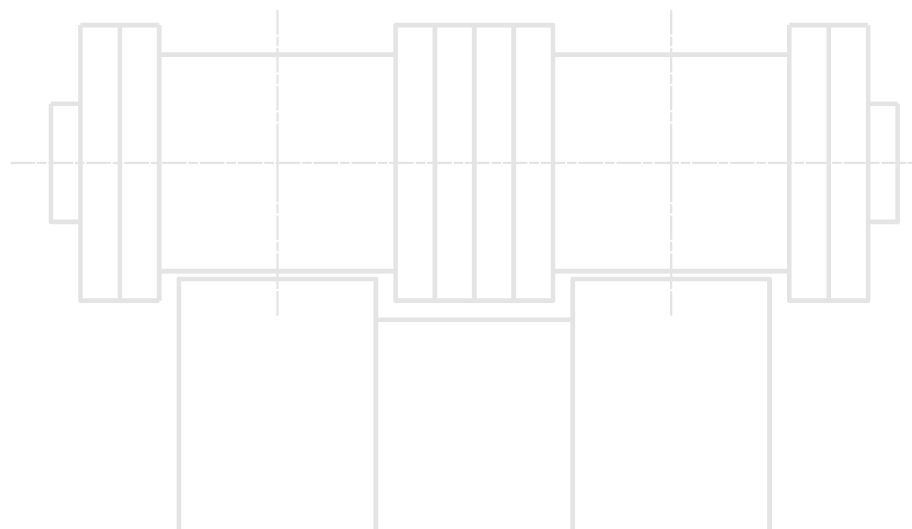


Chain size in inches	Chain size DIN8187	B mm	H mm	h mm	Weight kg/m	Length (tolerance +0/+7) mm	Part no.	Availability
3/8" x 5/32"	—	15	10	2.2	0.2	2000	221 110 010	○
1/2" x 3/16"	083-1							

All chain guides are available in Original Material "S"<sup>®</sup>green or Material "S" 1000<sup>®</sup>. Please order as follows:  
Example:  
Chain guide in Original Material "S"<sup>®</sup>green  
Part no.: 221 110 010  
Chain guide in Material "S" 1000<sup>®</sup>green  
Part no.: 221 120 010

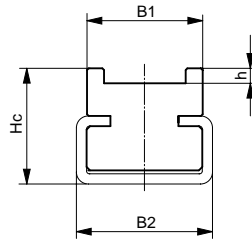
Special sizes/designs, other technical or high-performance materials on request. Special profiles, see pp 143–145. Intermediate sizes available at short notice and charged at full meter prices. Tolerances at cross-section of profile to DIN2768, tolerance class m. Properties of materials, see pg 14.

- ex stock
- at short notice on request



## Type CTU (Original Material "S"<sup>®</sup>green)

Chain Guides with Steel C-Profile  
for Roller Chains to **DIN8187**



Chain size in inches	Chain size DIN8187	C-profile type	B <sub>1</sub> mm	B <sub>2</sub> mm	H <sub>c</sub> mm	h mm	Weight kg/m	Length chain guide (tolerance +0/+7) mm	Length steel C-profile (tolerance +0/+40) mm	Part no. with steel C-profile, galvanized	Availability
3/8" x 5/32"	–	C3	17	20	17	2.2	0.61	2000	2000	221 310 210	●
1/2" x 3/16"	083-1								6000	221 310 310	●

All chain guides are available in Original Material "S"<sup>®</sup>green or Material "S" 1000<sup>®</sup>.

Please order as follows:

Example:

Chain guide in Original Material "S"<sup>®</sup>green with steel C-profile, galvanized

Part no.: 221 310 210

Chain guide in Material "S" 1000<sup>®</sup>green with steel C-profile, galvanized

Part no.: 221 320 210

Special sizes/designs, other technical or high-performance materials on request.

Steel C-profile in stainless steel (V2A) also available ex stock.

Chain guides also available without steel C-profile.

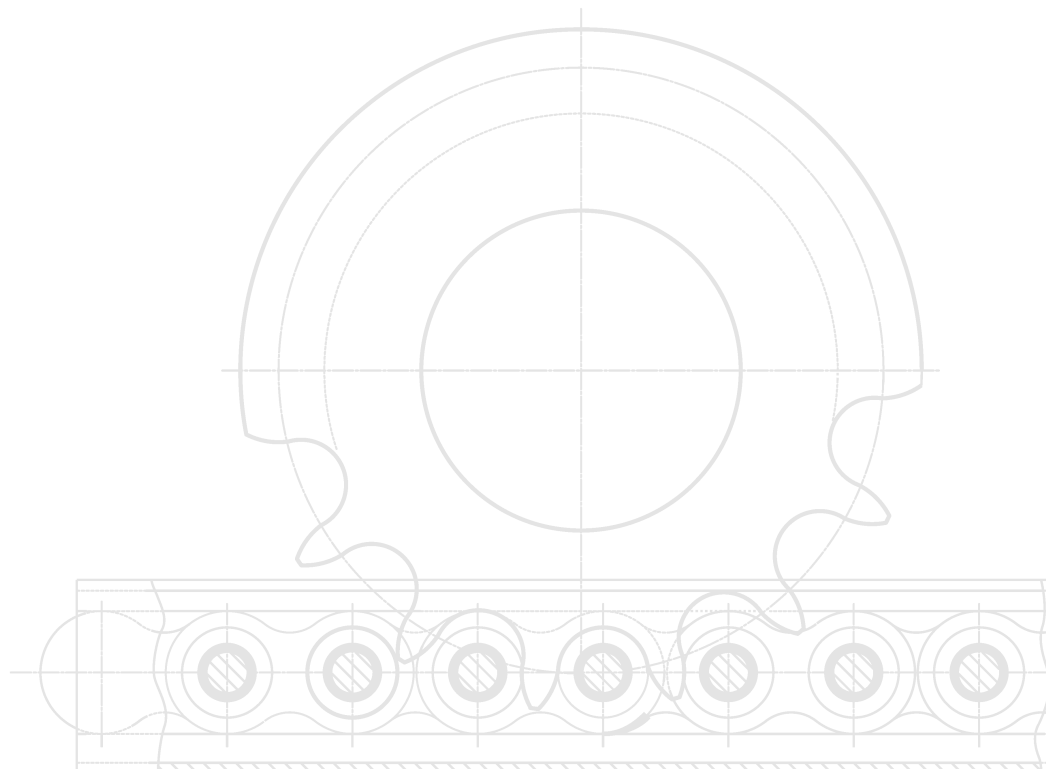
Special profiles, see pp 143–145.

Intermediate sizes available at short notice and charged at full meter prices. Tolerances at cross-section of plastic profile to DIN2768, tolerance class m.

Tolerances and sizes of steel C-profiles, see pp 135–136. Properties of materials, see pg 14.

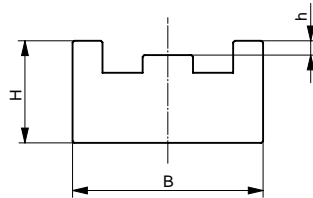
● ex stock

○ at short notice on request



# Type TS (Original Material "S"<sup>®</sup>green)

Chain Guides for Roller Chains  
to **DIN8187**



Chain size in inches	Chain size DIN8187	B mm	H mm	h mm	Weight kg/m	Length (tolerance +0/+7) mm	Part no.	Availability
3/8" x 7/32"	06B-1	20	10	1.1	0.19	2000	221 110 001	●
1/2" x 3/16"	083-1	20	10	1.4	0.19	2000	221 110 002	○
1/2" x 1/4"	085-1	22	10	1.6	0.21	2000	221 110 003	●
1/2" x 5/16"	08B-1	25	15	1.6	0.35	2000	221 110 004	●
5/8" x 1/4"	–	24	15	2.1	0.35	2000	221 110 005	○
5/8" x 3/8"	10B-1	28	15	2.1	0.39	2000	221 110 006	●
3/4" x 7/16"	12B-1	30	20	2.8	0.56	2000	221 110 007	●
1" x 17mm	16B-1	42	25	3.3	0.99	2000	221 110 008	●
1 1/4" x 3/4"	20B-1	50	25	4.0	1.18	2000	221 110 009	●

All chain guides are available in Original Material "S"<sup>®</sup>green or Material "S" 1000<sup>®</sup>.

Please order as follows:

Example:

Chain guide in Original Material "S"<sup>®</sup>green

Part no.: 221 110 001

Chain guide in Material "S" 1000<sup>®</sup> green

Part no.: 221 120 001

Special sizes/designs, other technical or high-performance materials on request.

Special profiles, see pp 143–145.

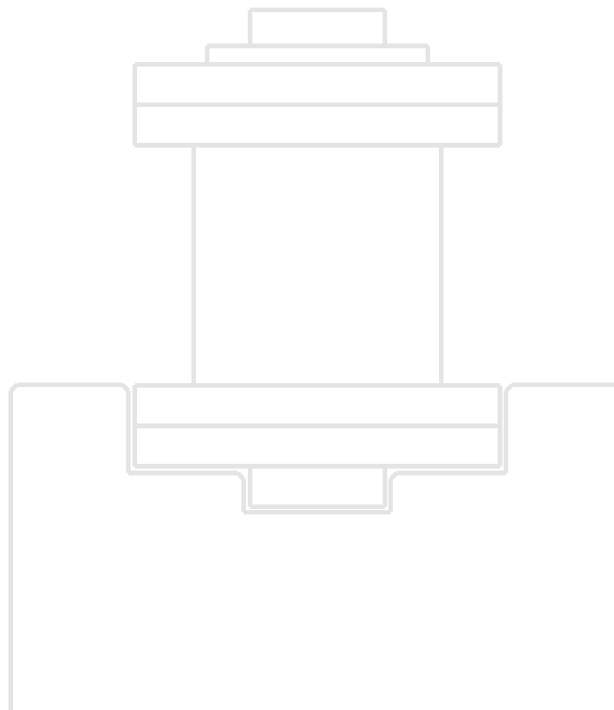
Intermediate sizes available at short notice and

charged at full meter prices. Tolerances at cross-section of profile to DIN2768, tolerance class m.

Properties of materials, see pg 14.

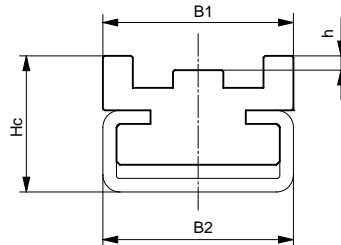
● ex stock

○ at short notice on request



## Type CTS (Original Material "S"<sup>®</sup>green)

### Chain Guides with Steel C-Profile for Roller Chains to **DIN8187**



Chain size in inches	Chain size DIN8187	C-profile type	B <sub>1</sub> mm	B <sub>2</sub> mm	H <sub>c</sub> mm	h mm	Weight kg/m	Length chain guide (tolerance +0/+7) mm	Length steel C-profile (tolerance +0/+40) mm	Part no. with steel C-profile, galvanized	Availability
3/8" x 7/32"	06B-1	C3	20	20	17	1.1	0.27	2000	2000 6000	221 310 201 221 310 301	● ●
1/2" x 3/16"	083-1	C3	20	20	17	1.4	0.27	2000	2000 6000	221 310 202 221 310 302	○ ○
1/2" x 1/4"	085-1	C3	22	20	17	1.6	0.80	2000	2000 6000	221 310 203 221 310 303	○ ○
1/2" x 5/16"	08B-1	C3	25	20	20	1.6	0.89	2000	2000 6000	221 310 204 221 310 304	● ●
5/8" x 1/4"	–	C3	25	20	20	2.1	0.89	2000	2000 6000	221 310 205 221 310 305	○ ○
5/8" x 3/8"	10B-1	C5	28	28	20	2.1	1.31	2000	2000 6000	221 310 206 221 310 306	● ●
3/4" x 7/16"	12B-1	C5	30	28	22	2.8	1.37	2000	2000 6000	221 310 207 221 310 307	● ●
1" x 17mm	16B-1	C9	42	38	30	3.3	2.42	2000	2000 6000	221 310 208 221 310 308	● ●
1 1/4" x 3/4"	20B-1	C9	50	38	35	4.0	2.84	2000	2000 6000	221 310 209 221 310 309	● ●

All chain guides are available in Original Material "S"<sup>®</sup>green or Material "S" 1000<sup>®</sup>.

Please order as follows:

Example:

Chain guide in Original Material "S"<sup>®</sup>green with steel C-profile, galvanized

Part no.: 221 310 201

Chain guide in Material "S" 1000<sup>®</sup>green

with steel C-profile, galvanized

Part no.: 221 320 201

Special sizes/designs, other technical or high-performance materials on request.

Steel C-profile in stainless steel (V2A) also available ex stock.

Chain guides also available without steel C-profile.

Special profiles, see pp 143–145.

Intermediate sizes available at short notice and

charged at full meter prices. Tolerances at cross-

section of plastic profile to DIN2768, tolerance class m.

Tolerances and sizes of steel C-profiles,

see pp 135-136.

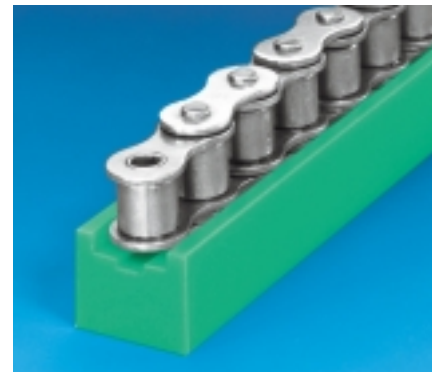
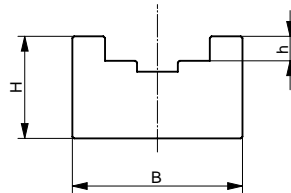
Properties of materials, see pg 14.

● ex stock

○ at short notice on request

# Type U (Original Material "S"<sup>®</sup> green)

## Chain Guides for Roller Chains to **DIN8187**



Chain size in inches	Chain size DIN8187	B mm	H mm	h mm	Weight kg/m	Length (tolerance +0/+7) mm	Part no.	Availability
3/8" x 5/32"	–	20	15	2.8	0.26	2000	221 110 012	○
3/8" x 7/32"	06B-1	20	15	2.8	0.26	2000	221 110 013	●
1/2" x 3/16"	083-1	20	15	2.3	0.25	2000	221 110 014	○
1/2" x 1/4"	085-1	20	15	3.2	0.25	2000	221 110 015	○
1/2" x 5/16"	08B-1	25	15	3.5	0.31	2000	221 110 017	●
5/8" x 1/4"	–	25	15	3.6	0.30	2000	221 110 016	○
5/8" x 3/8"	10B-1	25	15	3.6	0.30	2000	221 110 019	●
3/4" x 7/16"	12B-1	25	20	3.9	0.40	2000	221 110 020	●
1" x 17mm	16B-1	33	25	8.4	0.60	2000	221 110 021	●
1 1/4" x 3/4"	20B-1	55	25	10.0	1.08	2000	221 110 022	○
1 1/2" x 1"	24B-1	60	30	13.0	1.27	2000	221 110 023	○
1 3/4" x 31mm	28B-1	65	30	16.0	1.24	2000	221 110 024	○
2" x 31mm	32B-1	70	30	16.0	1.34	2000	221 110 025	○

All chain guides are available in Original Material "S"<sup>®</sup> green or Material "S" 1000<sup>®</sup>.

Please order as follows:

Example:

Chain guide in Original Material "S"<sup>®</sup> green

Part no.: 221 110 012

Chain guide in Material "S" 1000<sup>®</sup> green

Part no.: 221 120 012

Chain guides suitable for external shackle-type connector only.

Special sizes/designs, other technical or high-performance materials on request.

Special profiles, see pp 143–145.

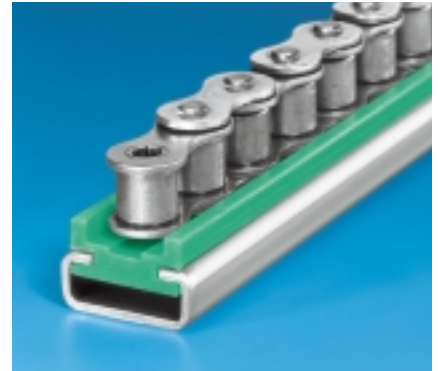
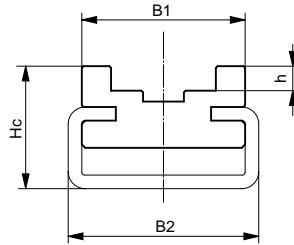
Intermediate sizes available at short notice and charged at full meter prices. Tolerances at cross-section of profile to DIN2768, tolerance class m. Properties of materials, see pg 14.

- ex stock
- at short notice on request



## Type CU (Original Material "S"<sup>®</sup> green)

### Chain Guides with Steel C-Profile for Roller Chains to **DIN8187**



Chain size inches	Chain size DIN8187	C- profile type	B <sub>1</sub> mm	B <sub>2</sub> mm	H <sub>c</sub> mm	h mm	Weight kg/m	Length chain guide (tolerance +0/+7) mm	Length steel C-profile (tolerance +0/+40) mm	Part no. with steel C-profile, galvanized	Avail- ability
3/8" x 5/32"	–	C3	20	20	17	2.8	0.75	2000	2000 6000	221 310 211 221 310 311	● ●
3/8" x 7/32"	06B-1	C3	20	20	17	2.8	0.75	2000	2000 6000	221 310 213 221 310 313	○ ○
1/2" x 3/16"	083-1	C3	20	20	17	2.3	0.74	2000	2000 6000	221 310 215 221 310 315	● ●
1/2" x 1/4"	085-1	C5	28	28	18	3.2	1.11	2000	2000 6000	221 310 217 221 310 317	○ ○
1/2" x 1/4" g=12,8mm	–	C5	28	28	18	3.5	1.17	2000	2000 6000	221 310 219 221 310 319	○ ○
1/2" x 5/16"	08B-1	C1	20	24	11	3.5	0.42	2000	2000 6000	221 310 212 221 310 312	● ●
5/8" x 1/4"	–	C5	24	28	18	3.6	1.16	2000	2000 6000	221 310 221 221 310 321	● ●
5/8" x 3/8"	10B-1	C5	24	28	18	3.6	1.13	2000	2000 6000	221 310 214 221 310 314	● ●
3/4" x 7/16"	12B-1	C5	24	28	18	3.9	1.13	2000	2000 6000	221 310 216 221 310 316	● ●
1" x 17mm	16B-1	C9	33	38	30	8.4	2.26	2000	2000 6000	221 310 218 221 310 318	● ●
1 1/4" x 3/4"	20B-1	C12	60	60	35	10.0	3.21	2000	2000 6000	221 310 220 221 310 320	● ●
1 1/2" x 1"	24B-1	C12	60	60	40	13.0	3.51	2000	2000 6000	221 310 222 221 310 322	● ●
1 3/4" x 31mm	28B-1	C12	65	60	45	16.0	4.01	2000	2000 6000	221 310 223 221 310 323	○ ○
2" x 31mm	32B-1	C12	70	60	45	16.0	4.21	2000	2000 6000	221 310 224 221 310 324	○ ○

All chain guides are available in Original Material "S"<sup>®</sup> green or Material "S" 1000<sup>®</sup>.  
Please order as follows:

Example:

Chain guide in Original Material "S"<sup>®</sup> green  
green with steel C-profile, galvanized  
Part no.: 221 310 211

Chain guide in Material "S" 1000<sup>®</sup> green  
green with steel C-profile, galvanized  
Part no.: 221 320 211

Special sizes/designs, other technical or high-performance materials on request.

Steel C-profile in stainless steel (V2A) also available ex stock.

Chain guides also available without steel C-profile.  
Special profiles, see pp 143–145.

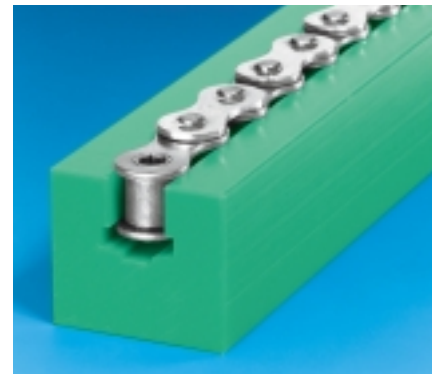
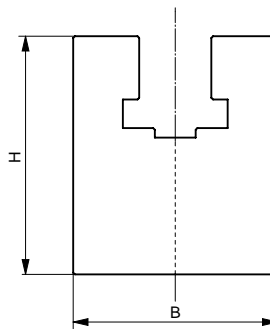
Intermediate sizes available at short notice and charged at full meter prices. Tolerances at cross-section of plastic profile to DIN2768, tolerance class m. Tolerances and sizes of steel C-profiles, see pp 135–136.

Properties of materials, see pg 14.

● ex stock  
○ at short notice on request

# Type K (Original Material "S"<sup>®</sup>green)

Chain Guides for Roller Chains  
to **DIN8187**



Chain size in inches	Chain size DIN8187	B mm	H mm	Weight kg/m	Length (tolerance +0/+7) mm	Part no.	Availability
3/8" x 5/32"	–	20	25	0.43	2000	221 110 026	●
3/8" x 7/32"	06B-1	20	25	0.43	2000	221 110 027	●
1/2" x 3/16"	083-1	20	25	0.42	2000	221 110 028	○
1/2" x 1/4"	085-1	24	30	0.55	2000	221 110 029	○
1/2" x 1/4" * g=12,8mm	–	24	30	0.55	2000	221 110 030	○
1/2" x 5/16"	08B-1	24	30	0.55	2000	221 110 031	●
5/8" x 1/4"	–	30	30	0.73	2000	221 110 032	●
5/8" x 3/8"	10B-1	30	35	0.83	2000	221 110 033	●
3/4" x 7/16"	12B-1	40	35	1.10	2000	221 110 034	●
1" x 17mm	16B-1	40	45	1.22	2000	221 110 035	●
1 1/4" x 3/4"	20B-1	50	50	1.76	2000	221 110 036	●
1 1/2" x 1"	24B-1	60	60	2.35	2000	221 110 037	●
1 3/4" x 31mm	28B-1	60	70	2.52	2000	221 110 038	●
2" x 31mm	32B-1	70	75	3.35	2000	221 110 039	○

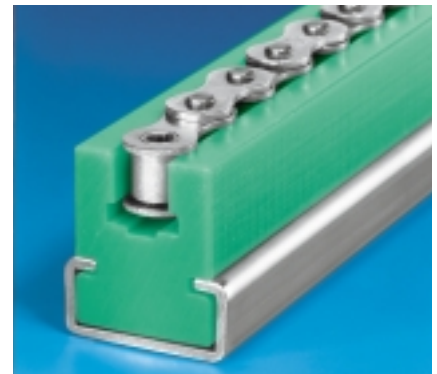
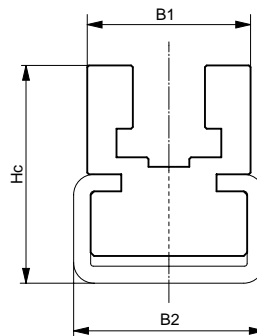
All chain guides are available in Original Material "S"<sup>®</sup> green or Material "S" 1000<sup>®</sup>.  
Please order as follows:  
Example:  
Chain guide in Original Material "S"<sup>®</sup> green  
Part no.: 221 110 026  
Chain guide in Material "S" 1000<sup>®</sup> green  
Part no.: 221 120 026

Chain guides suitable for external shackle-type connector only. Two-part design available on request. Special sizes/designs, other technical or high-performance materials on request. Special profiles, see pp 143–145. Intermediate sizes available at short notice and charged at full meter prices. Tolerances at cross-section of profile to DIN2768, tolerance class m. Properties of materials, see pg 14.

- ex stock
- at short notice on request

## Type CK (Original Material "S"<sup>®</sup> green)

Chain Guides with Steel C-Profile  
for Roller Chains to **DIN8187**



Chain size in inches	Chain size DIN8187	C-profile type	B <sub>1</sub> mm	B <sub>2</sub> mm	H <sub>c</sub> mm	Weight kg/m	Length chain guide (tolerance +0/+7) mm	Length steel C-profile (tolerance +0/+40) mm	Part no. with steel C-profile, galvanized	Availability
3/8" x 5/32"	–	C3	20	20	21	0.92	2000	2000 6000	221 310 225 221 310 325	● ●
3/8" x 2/32"	06B-1	C3	20	20	21	0.92	2000	2000 6000	221 310 226 221 310 326	● ●
1/2" x 3/16"	083-1	C3	20	20	21	0.92	2000	2000 6000	221 310 227 221 310 327	○ ○
1/2" x 1/4"	085-1	C7	24	28	32	1.76	2000	2000 6000	221 310 228 221 310 328	○ ○
1/2" x 1/4" g=12,8mm	–	C7	24	28	32	1.76	2000	2000 6000	221 310 229 221 310 329	○ ○
1/2" x 5/16"	08B-1	C7	24	28	32	1.76	2000	2000 6000	221 310 230 221 310 330	● ●
5/8" x 1/4"	–	C7	24	28	32	1.69	2000	2000 6000	221 310 231 221 310 331	○ ○
5/8" x 3/8"	10B-1	C7	24	28	32	1.69	2000	2000 6000	221 310 232 221 310 332	● ●
3/4" x 7/16"	12B-1	C9	32	38	43	2.86	2000	2000 6000	221 310 233 221 310 333	● ●
1" x 17mm	16B-1	C9	40	38	50	2.70	2000	2000 6000	221 310 234 221 310 334	● ●
1 1/4" x 3/4"	20B-1	C12	60	60	55	4.81	2000	2000 6000	221 310 235 221 310 335	○ ○
1 1/2" x 1"	24B-1	C12	60	60	65	5.01	2000	2000 6000	221 310 236 221 310 336	○ ○
1 3/4" x 31mm	28B-1	C12	70	60	80	6.21	2000	2000 6000	221 310 237 221 310 337	○ ○
2" x 31mm	32B-1	C12	70	60	80	6.21	2000	2000 6000	221 310 238 221 310 338	○ ○

All chain guides are available in Original Material "S"<sup>®</sup> green or Material "S" 1000<sup>®</sup>.

Please order as follows:

Example:

Chain guide in Original Material "S"<sup>®</sup> green with steel C-profile, galvanized

Part no.: 221 310 225

Chain guide in Material "S" 1000<sup>®</sup> green with steel C-profile, galvanized

Part no.: 221 320 225

Chain guides suitable for external shackle-type connector only. Two-part design available on request. Special sizes/designs, other technical or high-performance materials on request.

Steel C-profile in stainless steel (V2A) also available ex stock.

Chain guides also available without steel C-profile.

Special profiles, see pp 143-145.

Intermediate sizes available at short notice and charged at full meter prices. Tolerances at cross-section of plastic profile to DIN2768, tolerance class m.

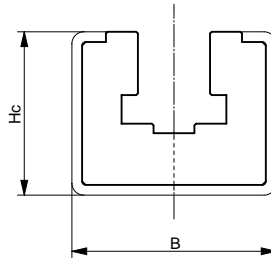
Tolerances and sizes of steel C-profiles, see pp 135-136.

Properties of materials, see pg 14.

- ex stock
- at short notice on request

## Type CKG (Original Material "S"<sup>®</sup>green)

Chain Guides with  
Steel C-Profile  
for Roller Chains to **DIN8187**



Chain size in inches	Chain size DIN8187	C-profile type	B mm	Hc mm	Weight kg/m	Length chain guide (tolerance +0/+7) mm	Length steel C-profile (tolerance +0/+40) mm	Part no. with steel C-profile, galvanized	Availability
3/8" x 5/32"	–	C10	30	24	1.47	2000	2000 6000	221 410 201 221 410 301	● ●
3/8" x 7/32"	06B-1	C10	30	24	1.30	2000	2000 6000	221 410 202 221 410 302	● ●
1/2" x 3/16"	083-1	C10	30	24	1.30	2000	2000 6000	221 410 203 221 410 303	● ●
1/2" x 1/4"	085-1	C10	30	24	1.30	2000	2000 6000	221 410 220 221 410 320	● ●
1/2" x 1/4" g=12,8mm	–	C10	30	24	1.30	2000	2000 6000	221 410 221 221 410 321	○ ○
1/2" x 5/16"	08B-1	C10	30	24	1.30	2000	2000 6000	221 410 204 221 410 304	● ●
5/8" x 1/4"	–	C10	30	24	1.30	2000	2000 6000	221 410 222 221 410 322	● ●
5/8" x 3/8"	10B-1	C10	30	24	1.30	2000	2000 6000	221 410 205 221 410 305	● ●
3/4" x 7/16"	12B-1	C10	30	24	1.30	2000	2000 6000	221 410 206 221 410 306	● ●
1" x 17mm	16B-1	C11	45	40	3.18	2000	2000 6000	221 410 207 221 410 307	● ●
1 1/4" x 3/4"	20B-1	C11	45	40	3.07	2000	2000 6000	221 410 208 221 410 308	● ●
1 1/2" x 1"	24B-1	C13	65	55	6.26	2000	2000 6000	221 410 209 221 410 309	● ●
1 3/4" x 31mm	28B-1	C13	65	55	5.86	2000	2000 6000	221 410 210 221 410 310	● ●
2" x 31mm	32B-1	C13	65	55	5.76	2000	2000 6000	221 410 211 221 410 311	● ●

All chain guides are available in Original Material "S"<sup>®</sup>green or Material "S" 1000<sup>®</sup>.

Please order as follows:

Example:

Chain guide in Original Material "S"<sup>®</sup>green with steel C-profile, galvanized  
Part no.: 221 410 201

Chain guide in Material "S" 1000<sup>®</sup>green with steel C-profile, galvanized  
Part no.: 221 420 201

Chain guides suitable for external shackle-type connector only. Two-part design available on request. Special sizes/designs, other technical or high-performance materials on request.

Steel C-profile in stainless steel (V2A) also available ex stock.

Chain guides also available without steel C-profile. Special profiles, see pp 143–145.

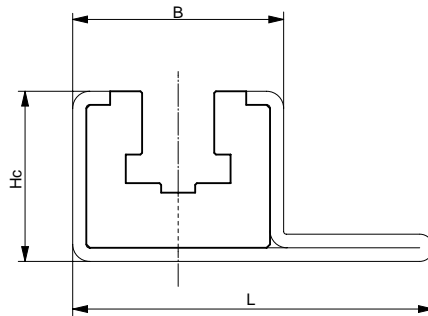
Intermediate sizes available at short notice and charged at full meter prices.

Tolerances at cross-section of plastic profile to DIN 2768, tolerance class m. Tolerances and sizes of steel C-profiles, see pp 135–136. Properties of materials, see pg 14.

- ex stock
- at short notice on request

## Type CKG 15 V (Original Material "S"<sup>®</sup>green)

Chain Guides with  
Steel C-Profile  
for Roller Chains  
to **DIN8187**



Chain size in inches	Chain size DIN8187	C-profile type	B mm	H <sub>c</sub> mm	L mm	Weight kg/m	Length chain guide (tolerance +0/+7) mm	Length steel C-profile (tolerance +0/+40) mm	Part no. with steel C-profile, galvanized	Availability
3/8" x 5/32"	–	C15 V	31	25	53	2.34	2000	2000 6000	221 410 228 221 410 328	● ●
3/8" x 7/32"	06B-1	C15 V	31	25	53	2.34	2000	2000 6000	221 410 216 221 410 316	● ●
1/2" x 3/16"	083-1	C15 V	31	25	53	2.30	2000	2000 6000	221 410 229 221 410 329	● ●
1/2" x 1/4"	085-1	C15 V	31	25	53	2.30	2000	2000 6000	221 410 230 221 410 330	● ●
1/2" x 5/16"	08B-1	C15 V	31	25	53	2.30	2000	2000 6000	221 410 217 221 410 317	● ●
5/8" x 1/4"	–	C15 V	31	25	53	2.25	2000	2000 6000	221 410 232 221 410 332	● ●
5/8" x 3/8"	10B-1	C15 V	31	25	53	2.25	2000	2000 6000	221 410 218 221 410 318	● ●
3/4" x 7/16"	12B-1	C15 V	31	25	53	2.25	2000	2000 6000	221 410 219 221 410 319	● ●

All chain guides are available in Original Material "S"<sup>®</sup>green or Material "S" 1000<sup>®</sup>. Please order as follows:

Example:

Chain guide in Original Material "S"<sup>®</sup>green with steel C-profile, galvanized  
Part no.: 221 410 228

Chain guide in Material "S" 1000<sup>®</sup> green with steel C-profile, galvanized  
Part no.: 221 420 228

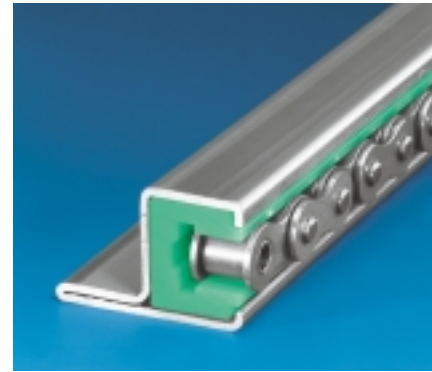
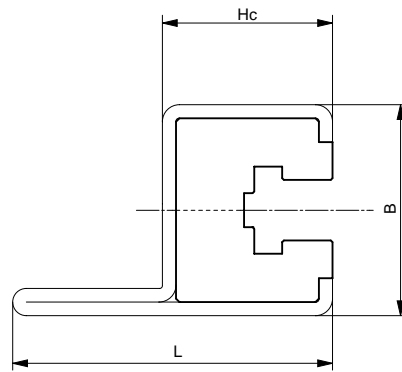
Chain guides suitable for external shackle-type connector only. Two-part design available on request. Special sizes/designs, other technical or high-performance materials on request. Steel C-profile in stainless steel (V2A) also available ex stock. Chain guides also available without steel C-profile. Special profiles, see pp 143–145.

Intermediate sizes available at short notice and charged at full meter prices. Tolerances at cross-section of plastic profile to DIN2768, tolerance class m. Tolerances and sizes of steel C-profiles, see pp 135–136. Properties of materials, see pg 14.

- ex stock
- at short notice on request

# Type CKG 14 H (Original Material "S"<sup>®</sup>green)

## Chain Guides with Steel C-Profile for Roller Chains to **DIN8187**



Chain size in inches	Chain size DIN8187	C-profile type	B mm	H <sub>C</sub> mm	L mm	Weight kg/m	Length chain guide (tolerance +0/+7) mm	Length steel C-profile (tolerance +0/+40) mm	Part no. with steel C-profile, galvanized	Availability
3/8" x 5/32"	–	C14H	31	25	47	2.30	2000	2000 6000	221 410 223 221 410 323	● ●
3/8" x 7/32"	06B-1	C14H	31	25	47	2.29	2000	2000 6000	221 410 212 221 410 312	● ●
1/2" x 3/16"	083-1	C14H	31	25	47	2.29	2000	2000 6000	221 410 224 221 410 324	● ●
1/2" x 1/4"	085-1	C14H	31	25	47	2.29	2000	2000 6000	221 410 225 221 410 325	● ●
1/2" x 5/16"	08B-1	C14H	31	25	47	2.29	2000	2000 6000	221 410 213 221 410 313	● ●
5/8" x 1/4"	–	C14H	31	25	47	2.24	2000	2000 6000	221 410 227 221 410 327	● ●
5/8" x 3/8"	10B-1	C14H	31	25	47	2.24	2000	2000 6000	221 410 214 221 410 314	● ●
3/4" x 7/16"	12B-1	C14H	31	25	47	2.20	2000	2000 6000	221 410 215 221 410 315	● ●

All chain guides are available in Original Material "S"<sup>®</sup>green or Material "S" 1000<sup>®</sup>. Please order as follows:  
Example:  
Chain guide in Original Material "S"<sup>®</sup>green with steel C-profile, galvanized  
Part no.: 221 410 223  
Chain guide in Material "S" 1000<sup>®</sup>green with steel C-profile, galvanized  
Part no.: 221 420 223

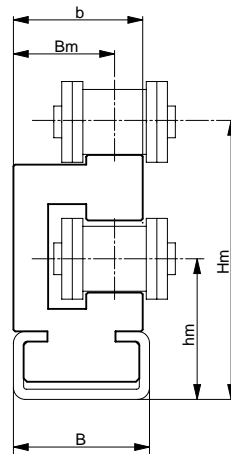
Chain guides suitable for external shackle-type connector only. Two-part design available on request. Special sizes/designs, other technical or high-performance materials on request. Steel C-profile in stainless steel (V2A) also available ex stock. Chain guides also available without steel C-profile. Special profiles, see pp 143–145.

Intermediate sizes available at short notice and charged at full meter prices. Tolerances at cross-section of plastic profile to DIN2768, tolerance class m. Tolerances and sizes of steel C-profiles, see pp 135–136. Properties of materials, see pg 14.

- ex stock
- at short notice on request

## Type ETA (Original Material "S"<sup>®</sup> green)

Double-Decker Chain Guides with  
Steel C-Profile  
for Roller Chains to **DIN8187**



Chain size in inches	Chain size DIN8187	C-profile type	B mm	Hm mm	b mm	Bm mm	hm mm	Weight kg/m	Length chain guide (tolerance +0/+7) mm	Length steel C-profile (tolerance +0/+40) mm	Part no.	Availability
3/8" x 7/32"	06B-1	C3	20	30.2	17	14.5	17	0.90	2000	2000 6000	221 310 239 221 310 339	● ●
1/2" x 5/16"	08B-1	C3	20	33.8	20	16.5	18	0.97	2000	2000 6000	221 310 240 221 310 340	● ●
5/8" x 3/8"	10B-1	C3	20	41.1	20	15.5	21	1.13	2000	2000 6000	221 310 241 221 310 341	● ●
3/4" x 7/16"	12B-1	C5	28	46.5	24	18.5	24	1.72	2000	2000 6000	221 310 242 221 310 342	● ●
1" x 17 mm	16B-1	C9	38	62.0	33	25.0	34	3.17	2000	2000 6000	221 310 243 221 310 343	● ●

All chain guides are available in Original Material "S"<sup>®</sup> green or Material "S" 1000<sup>®</sup>.

Please order as follows:

Example:

Chain guide in Original Material "S"<sup>®</sup> green with steel C-profile, galvanized  
Part no.: 221 310 239

Chain guide in Material "S" 1000<sup>®</sup> green with steel C-profile, galvanized  
Part no.: 221 320 239

Special sizes/designs, other technical or high-performance materials on request.

Steel C-profile in stainless steel (V2A) also available ex stock.

Chain guides also available without steel C-profile. Special profiles, see pp 143–145.

Intermediate sizes available at short notice and charged at full meter prices. Tolerances at cross-section of plastic profile to DIN2768, tolerance class m.

Tolerances and sizes of steel C-profiles, see pp 135–136.

Properties of materials, see pg 14.

- ex stock
- at short notice on request

